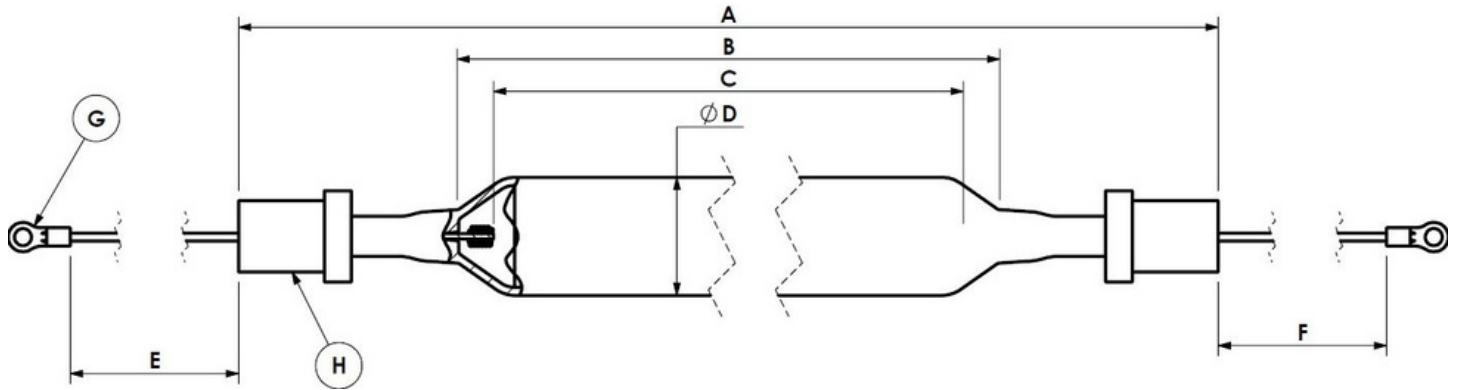


Please provide us with your lamp reference number in the field below.

LAMP REFERENCE NUMBER:

If lamp reference is unknown or not applicable, proceed to fill in the additional fields below.




LAMP CHARACTERISTICS:

TOTAL LENGTH (A): mm
SHOULDER LENGTH (B): mm
ARC LENGTH (C): mm
DIAMETER (D): mm
LEAD LENGTH (E): mm
(F): mm

ELECTRICAL DATA:

LAMP VOLTAGE: V
LAMP CURRENT: A
LAMP POWER: W
LAMP POWER/DENSITY: W/cm

LEAD TERMINALS (G):

BOOTLACE: EYELET:  J: mm

NONE:

OTHER:

(If unknown please send photo or engineering drawing with dimensions)

END CAP (SOCKET) NUMBER (H):

(If unknown please send photo or engineering drawing with dimensions)

LAMP TYPE:

MERCURY: GALLIUM: IRON:
UNKNOWN:
OTHER:
KEY WAVELENGTH(S) REQUIRED: nm

QUARTZ TYPE:

STANDARD:
OZONE REDUCING:
SYNTHETIC:
UNKNOWN:

POWER SUPPLY:

CHOKES AND IGNITOR:
AUTO TRANSFORMER WITH HIGH VOLTAGE CHOKES:
TRANSFORMER WITH HIGH VOLTAGE CAPACITORS (CONSTANT WATTAGE):
ELECTRONIC POWER SUPPLY:

ADDITIONAL INFORMATION:

UV MACHINE:
UV SYSTEM:
LOCAL MAINS FREQUENCY: Hz
LOCAL MAINS VOLTAGE: V

OTHER REQUIREMENTS:

REFLECTORS:
QUARTZ PLATES:
IR LAMPS:
POWER SUPPLY/BALLAST IGNITORS:
MERCURY SPILL KIT: